

Clarity AI Sustainability Raw Data

Integrate market leading data
into your ecosystem





Integrate market leading data into your ecosystem



Flexible: Select your most relevant indicators from our expanding inventory

From environmental metrics to social or governance indicators, select those that best fit your purpose, and just pay for what you use.

Hundreds of quantitative and qualitative indicators to choose from Environmental, Social and Governance pillars, including GHG emissions, energy, water, waste, gender and diversity, human rights or board and management relationships.

Additionally we offer thematic templates to help our clients identify the most relevant indicators for specific purposes:

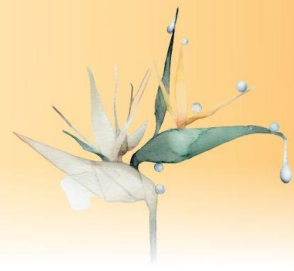
- GHG emissions
- Energy Transition
- Water and natural resources
- Gender Equality
- Human rights and labour relationships
- Good governance



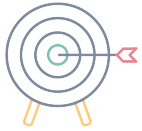
Market leading coverage: Ensure an exhaustive analysis with data for 40,000+ issuers

Over 40.000 issuers, up to 3x more than the average of the market. As a principle we collect every company that reports, and expand our coverage with AI estimations.

We cover over 98% of MSCI ACWI IMI, 99% of S&P 500, 98% of STOXX Europe 600 and TOPIX and 94% of Russell 2000 with at least 8 of the most relevant ESG indicators.



Integrate market leading data into your ecosystem



Leading quality: take decisions with confidence

Advanced technology ensures reliable data, at scale. The journey of a datapoint through several quality control processes ensures that we can deliver the best quality data.

Collection process

Each data point is compared with the value of a third party provider when available, and independently checked by up to four different people.

Reliability

An ML algorithm allows us to identify values that do not meet the expectations for a particular company based on many features and their non-linear relationships.

Curation process

An independent team of data experts validates each version of our dataset, and connects with issuers to adjust and understand inconsistencies.



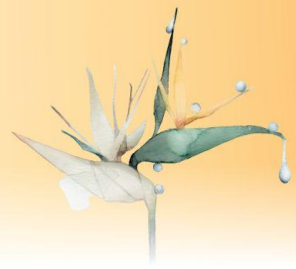
Transparency: Track the datapoint to the source

Our leading metadata allows users to understand the source of the data to gain confidence.

Some of our features include:

- Link to report and page where a datapoint was disclosed
- Identification of the type of disclosure (reported, estimated...)
- Date of the disclosure
- Explainability on how a datapoint is calculated or estimated and what components were used
- Name of the data provider.

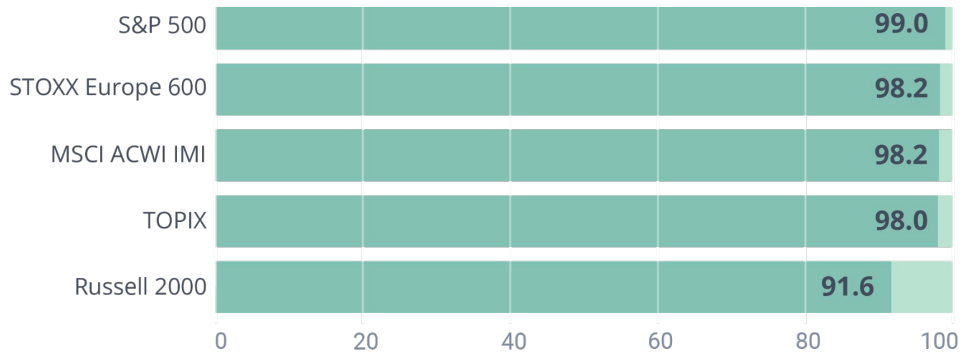
Delivery: Our Standard delivery is monthly a CSV datafeed, in long format, delivered to our AWS hosted S3 buckets.



Market Leading Coverage

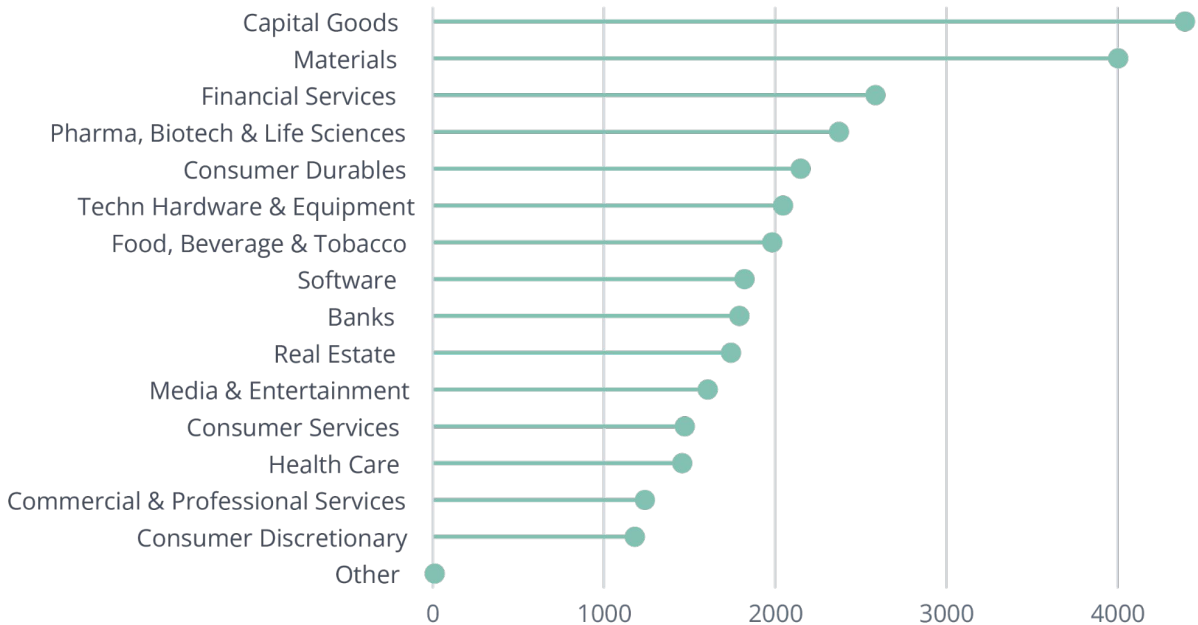
Clarity AI Raw Data Solutions Coverage

By Index



Clarity AI Raw Data Solutions - Issuer Coverage

By Sector

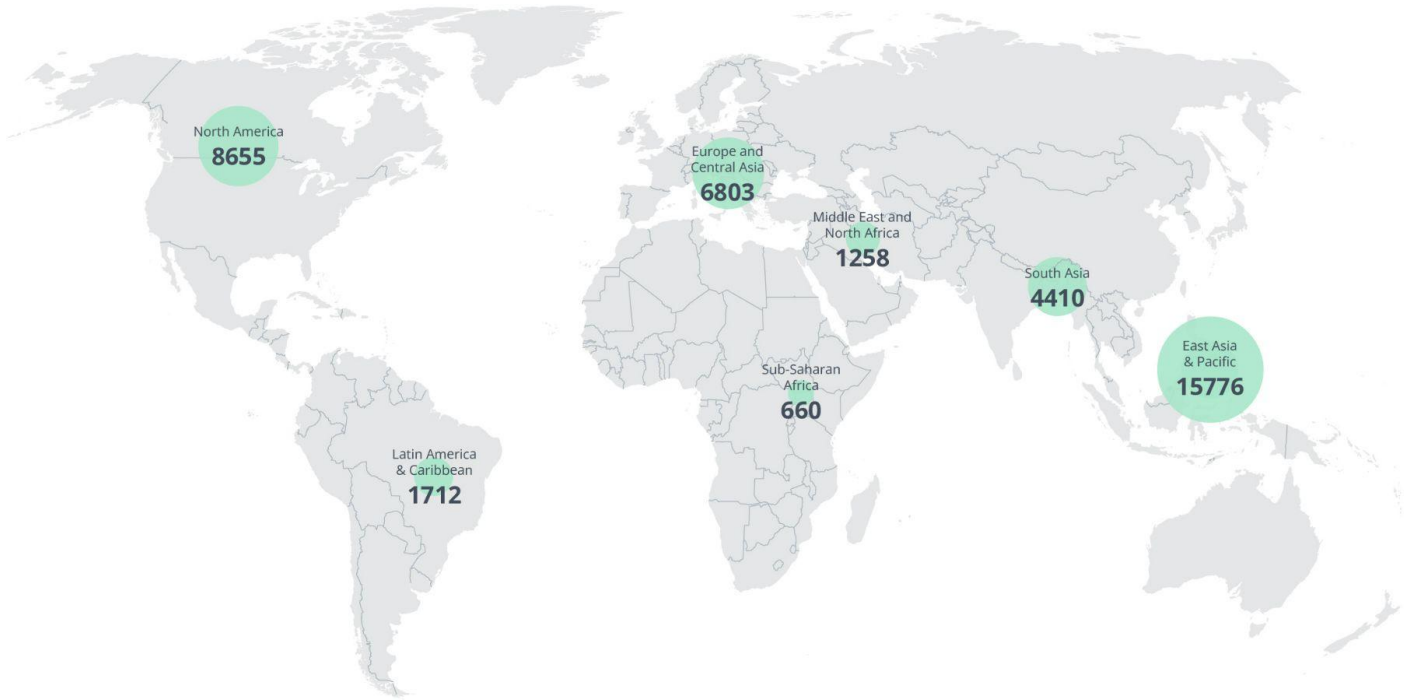




Market Leading Coverage

Clarity AI Raw Data Solutions - Issuer Coverage

By Geography





About Clarity AI

Clarity AI is a sustainability technology platform that uses machine learning and big data to deliver environmental and social insights to investors, organizations, and consumers. Clarity AI's capabilities are an essential tool for end-to-end sustainability analysis related to investing, corporate research, benchmarking, consumer ecommerce, and regulatory reporting. As of June 2023, Clarity AI's platform analyzes more than 70,000 companies, 420,000 funds, 201 countries, and 199 local governments, which represents more breadth than any other player in the market. One way Clarity AI delivers on its mission to bring societal impact to markets is by ensuring its capabilities are delivered directly into clients' workflows through integrations with partners like BlackRock - Aladdin, Refinitiv an LSEG business, BNP Manaos, CACEIS, and Simcorp. Additionally, Clarity AI's sustainability insights reach more than 150 million consumers across more than 400,000 merchants on the Klarna platform. Clarity AI has offices in North America, Europe, and the Middle East, and its client network manages tens of trillions in assets and includes companies like Invesco, Nordea, BlackRock, Santander, Wellington, and BNP Paribas.

Legal Disclaimer

This document and its content (the "Document") as well as all related rights are the exclusive property of Clarity AI Inc. and its affiliates and/or respective licensors ("Clarity AI"). The recipient of this Document shall keep it strictly confidential.

This Document may not be construed as an offer, and is provided solely for the purpose of engaging in commercial discussions regarding Clarity AI's products and services. Any further use is subject to written authorization by Clarity AI. Any provision of products or services by Clarity AI shall be subject to a final written agreement mutually executed between Clarity AI and recipient. Although reasonable care has been taken in the preparation of this Document, Clarity AI disclaims any and all warranties regarding this Document, whether express or implied, to the extent allowed by law, including but not limited to: warranties of absence of error, non-infringement of third-party rights (including intellectual property rights), accuracy, completeness, reliability, and possibility of profits or any form of results expected by the recipient.

Clarity AI also disclaims all warranties of compliance with any particular law, decree or other form of regulation, in relation to or resulting from the use of Clarity AI's products or services. Under no circumstances shall this Document or the Clarity AI products or services be construed as the provision of financial or legal advice or recommendation. Clarity AI recommends that the recipient of this Document and any intended beneficiary of Clarity AI's products and services obtain independent expert advice regarding such matters.